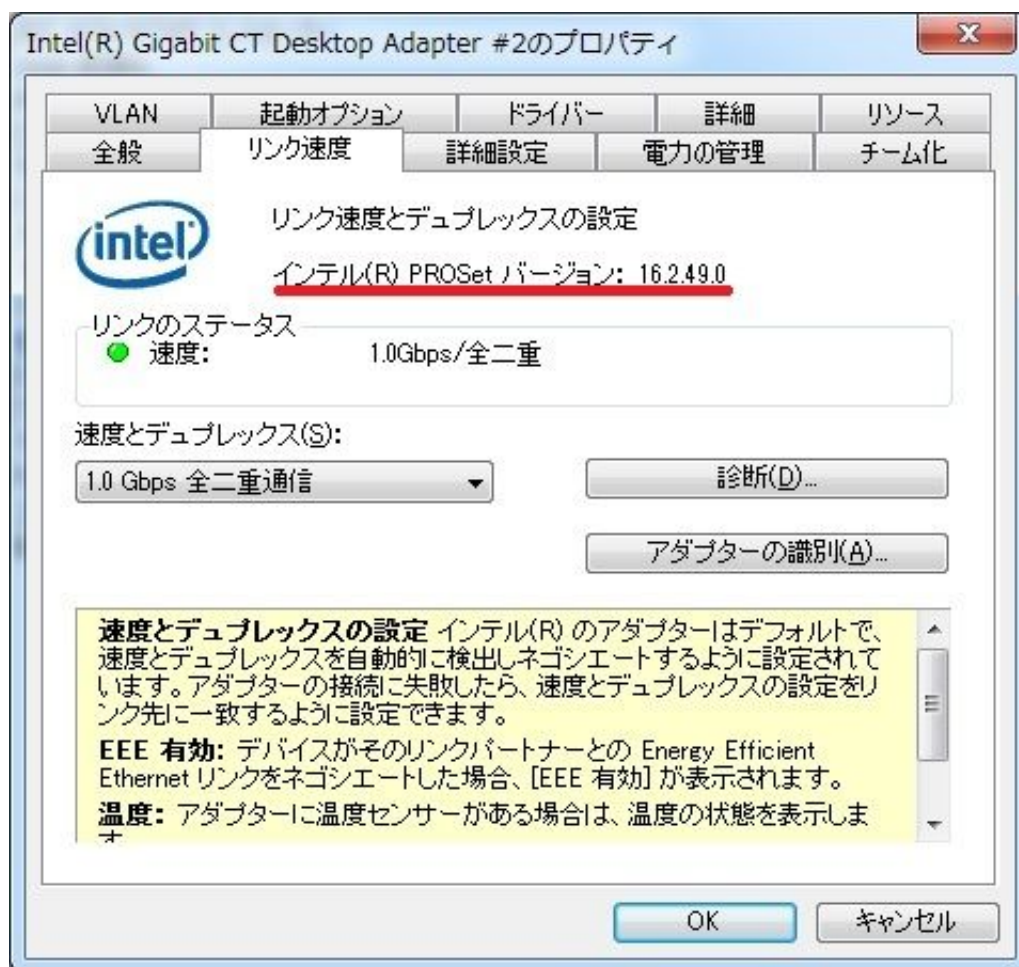




0-WEB.ru

[Intel 82579Lm Drivers Windows 10](#)



[Intel 82579Lm Drivers Windows 10](#)



0-WEB.ru

---

As mentioned earlier you read about a patch which could solve the issue, can you share where you read that information As this is an onboard NIC, customization might be made in order to adapt to the board design, please try check with MSI for the configuration and BIOS setting on where you can adjust the power management setting.

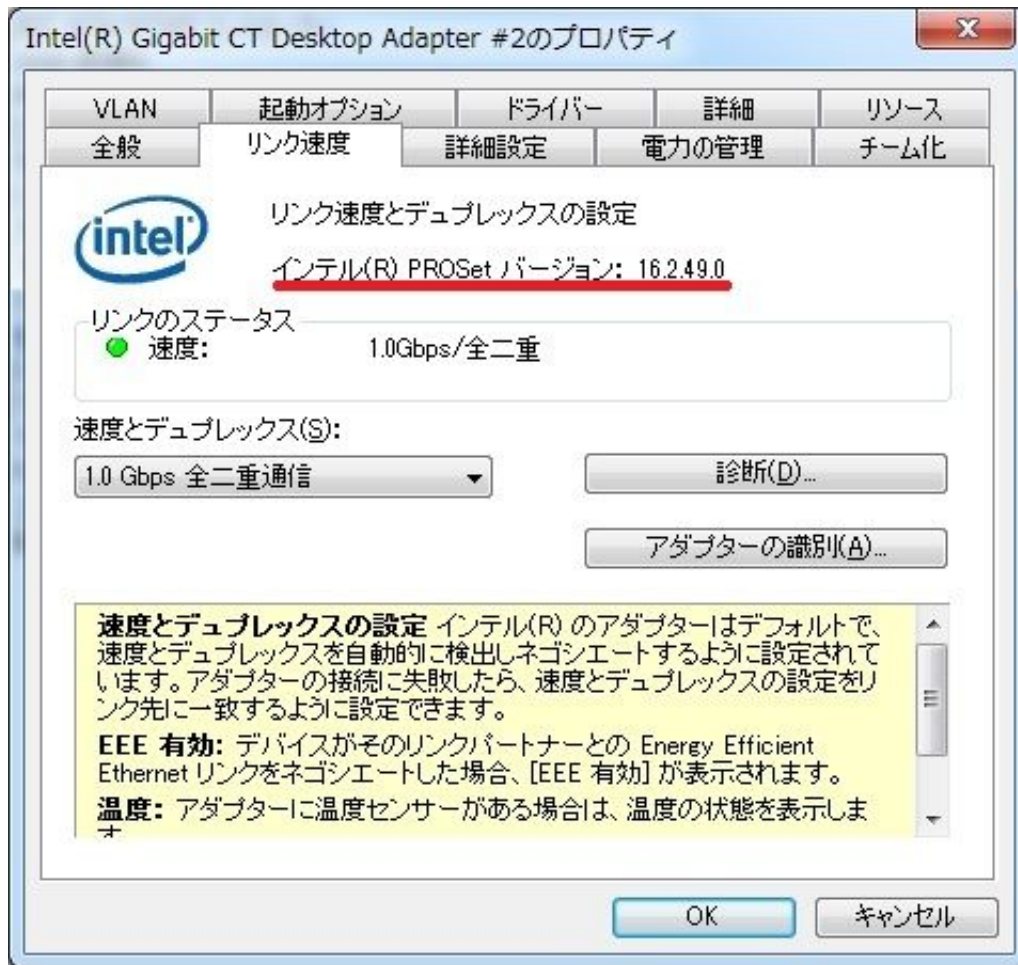
1. [intel drivers windows 10](#)
2. [intel drivers windows 7 64 bit](#)
3. [intel drivers windows](#)

Thanks Regards, sharon What I need is a advice where exactly I can disable the sleep mode for the internet adapter: In some tutorials this option should be in the Power Settings of the adapter: However, this option is not present in my configuration - please see attached file.

## **intel drivers windows 10**

intel drivers windows 10, intel drivers windows 10 64 bit, intel drivers windows 7 64 bit, intel drivers windows 8.1, intel drivers windows, intel drivers windows 7 32 bit, intel drivers windows xp, intel drivers windows 8.1 64 bit, intel drivers windows 10 32 bit, intel drivers windows 8.1 32 bit, intel drivers windows 7 network, intel drivers windows 10 chipset [real book android cracked app](#)

After rebooting the system the internet connection is functioning again Intel 82579Lm Install The NewestI tried to install the newest driver from intel download site more times without success: Download Intel Network Adapter Driver for Windows 10 My Motherboard: MSI-7760 Failure protocol attached. [Rhino 6 Download Mac](#)



[Best 2d Rpgs On Steam](#)

## intel drivers windows 7 64 bit

[Schwarzes Blut Betontod Rarest](#)

Can you advice me where I can switch the sleep (power saving) option off If this will not help, I am going to contact MSI.. Thank you Regards, sharon. As this is an onboard NIC on MSI system, have you tried contacting MSI for the customized driver, it is recommended to use the system vendors driver which are validate driver for your system: Please feel free to update me.. Can you try to check if there is advanced Tab in the property, adjust the value in Energy Efficient Ethernet If not you may also check in the BIOS if there is power management option for you to disable. [Photoshop Elements For Mac Os](#)

## intel drivers windows

[Adobe Cc All Product X-force Keygen Activator](#)

Intel 82579Lm Install The NewestCan you double check the following 1) Try changing the cable 2) Update the board BIOS in case not the latest version 3) Can you check if you have System Power Idle Saver in the advance property of the network adapter If yes, can you try to disable or enable depend on the parameter set 4) What is the patch you refer to Please share where you obtain the information. ae05505a44 [Licence Key Nba2k17](#)

ae05505a44

---

[XXXXXXXXXX](#)